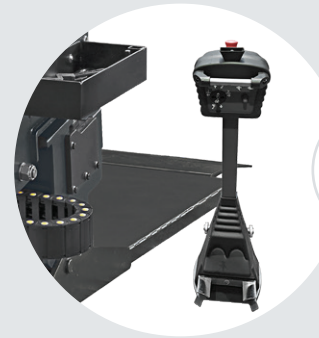
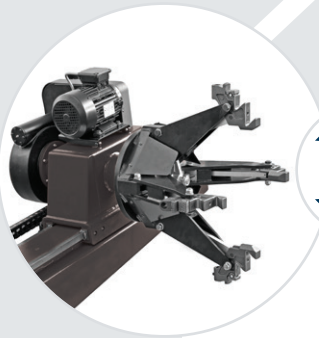
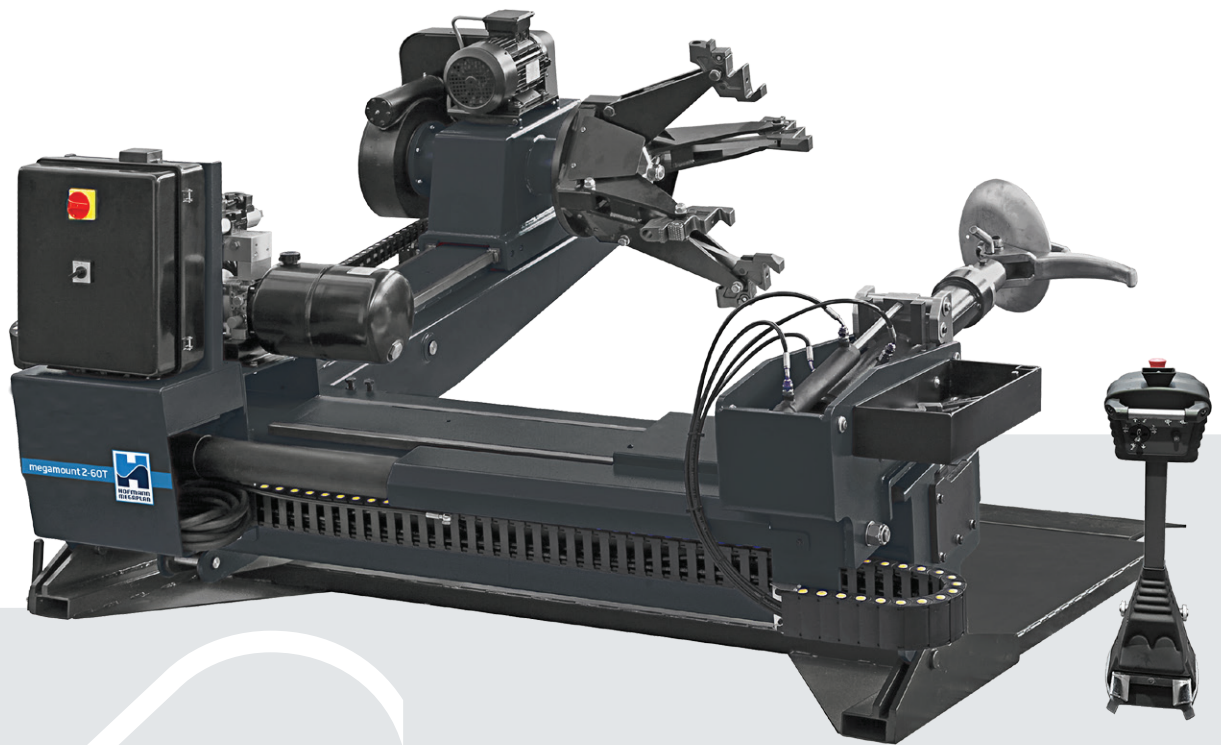




megamount 2-60T

SUPERAUTOMATIC TYRE CHANGER FOR WHEELS OF HEAVY VEHICLES UP TO 60"



Self-centering chuck

The self-centering chuck has 4 jaws with locking capacity from 14" to 42". Working capacity can be increased up to 60" using the optional extensions. The 5 clamping points of the jaws ensure a perfect clamping of any type of rim. The spindle has two rotation speeds in two directions. The self-centering chuck operates by means of a high pressure hydraulic circuit to handle all types of steel and alloy rims and adjustable up to 140 bar.

Tool-holder arm

The tool-holder arm elevation and rotation are fully automatic. The working system is LeverLess thanks to the tool clamping in a retracted position. The quick unlocking system ensures ease and speed during operation change. The innovative *tool always in line* technology allows the disc and the tool to be always in the right working position, thus ensuring greater ease and speed during M/D operations, more safety for the operator and greater protection of tyre and rim.

Control unit

The machine is equipped with a low voltage portable control unit, easily movable inside the working area. The rational lay-out of control levers, buttons and pedals prevents the operator from making accidental operational errors. The control unit also controls the translational movement of the tool-holder carriage. Equipped with stand-by function and emergency button as standard.

Standard accessories



Bead lifting lever



Aluminum rim clamp

Optional accessories



4 clamping extension (up to 60")



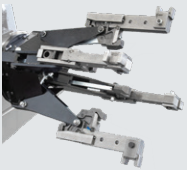
Set of 4 plastic protections for aluminum rims



Ring protection for 22,5" alloy rim



Pneumatic bead pressing tool



Caterpillar clamping adaptors kit



Adaptor for internal hole 100 mm (1 pc)



LL cylinder - for leverless demounting

Versions on request

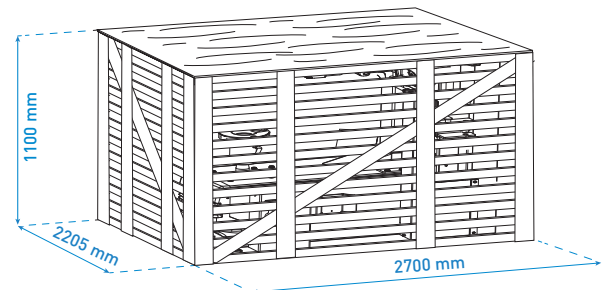
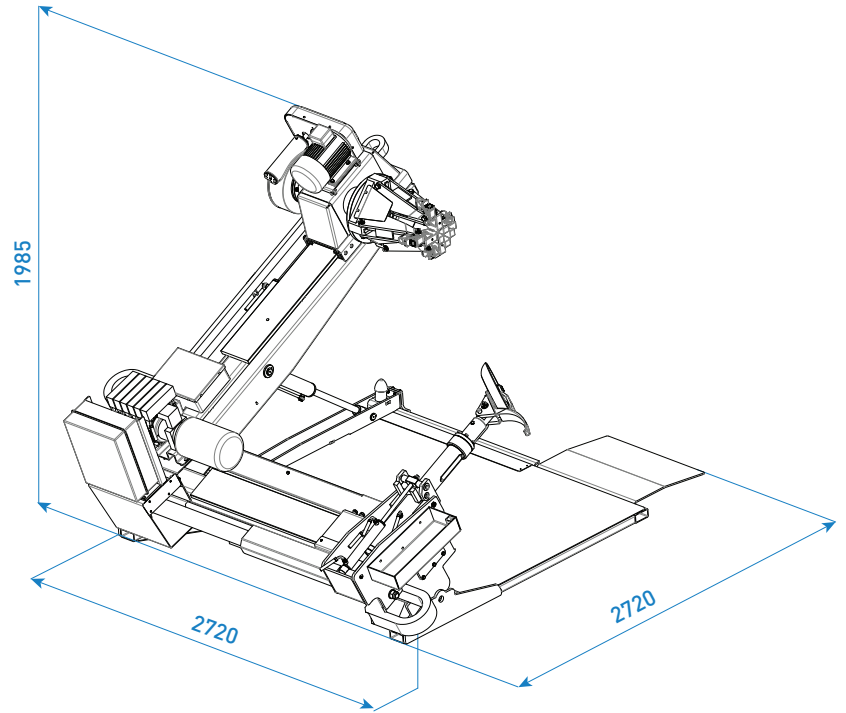
megamount 2-60T

Version at 230V / 50-60 Hz / 3-phase

megamount 2-60TR: with radio controlled commands.

Version at 400V / 50-60 Hz / 3-phase

Version at 230V / 50-60 Hz / 3-phase



Technical Data

Clamping capacity	14" ÷ 42" (14" ÷ 60" ext.)
Max wheel diameter	2700 mm (106")
Max wheel width	1500 mm (59")
Max wheel weight	2500 kg
Max bead-breaking power	30.000 N
Speed of rotation	4.5 - 9 rpm
3-Phase motor	2.2 - 3 kW (2 hp)
Power supply	400 V/3/50-60Hz
Net weight	1550 kg



HOFMANN MEGAPLAN GmbH
Hüttenstrasse 7 - 67550 Worms - Germany
T +49 (0)6242 913 6666 - hm-mail@hofmann-megaplan.com
www.hofmann-megaplan.com